



Symbol Key

Conventionals

- ETC S4 14°
  - ETC S4 19°
  - ETC S4 26°
  - ETC S4 36°
  - MR-16 Birdie WFL
- LEDs
- ETC S4 LUSTR2 19°
  - ETC S4 LUSTR2 26°
  - ETC ColorSource CYC
  - Chauvet DJ Pinpoint Bar
  - Chauvet COLORado Batten 72

Customs

- Photoflex Dimmable Softbox
- 4' x 2' Costec LED Panel
- RGBW Neonflex

Moving Heads

- Chauvet Maverick Silens 2 Profile

Typical

- Gobo DMX Iris Channel

Lighting Design by Jackson Funke Design  
 jacksonfunkedesign@gmail.com  
 (612).584.7200

Director ..... Alex Timbers	Associate LD ..... Natasha Katz
Scenic Design ..... Scott Paak	Assistant LD ..... Ken Posner
Costume Design ..... Gabriella Skala	Production LX ..... The Ghost of Stanley McCandles
Sound Design ..... Peter Hylenski	

This drawing represents visual concepts only. The designers are unqualified to determine the structural or electrical appropriateness of this design and will not assume responsibility for improper engineering construction, handling, or use. All materials and construction must comply with the most stringent applicable federal and local fire, safety, energy, and environmental codes.

	REV
	A

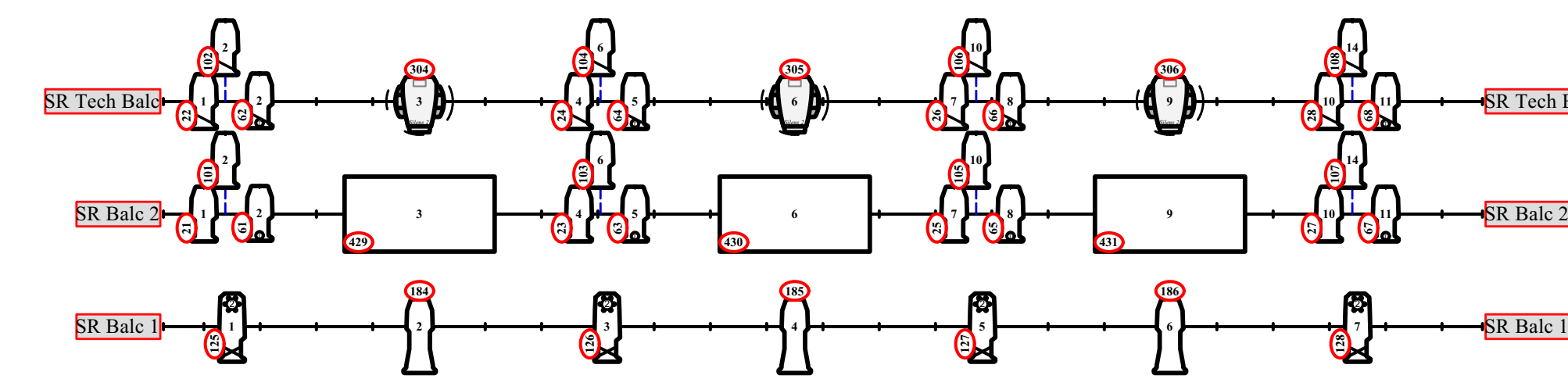
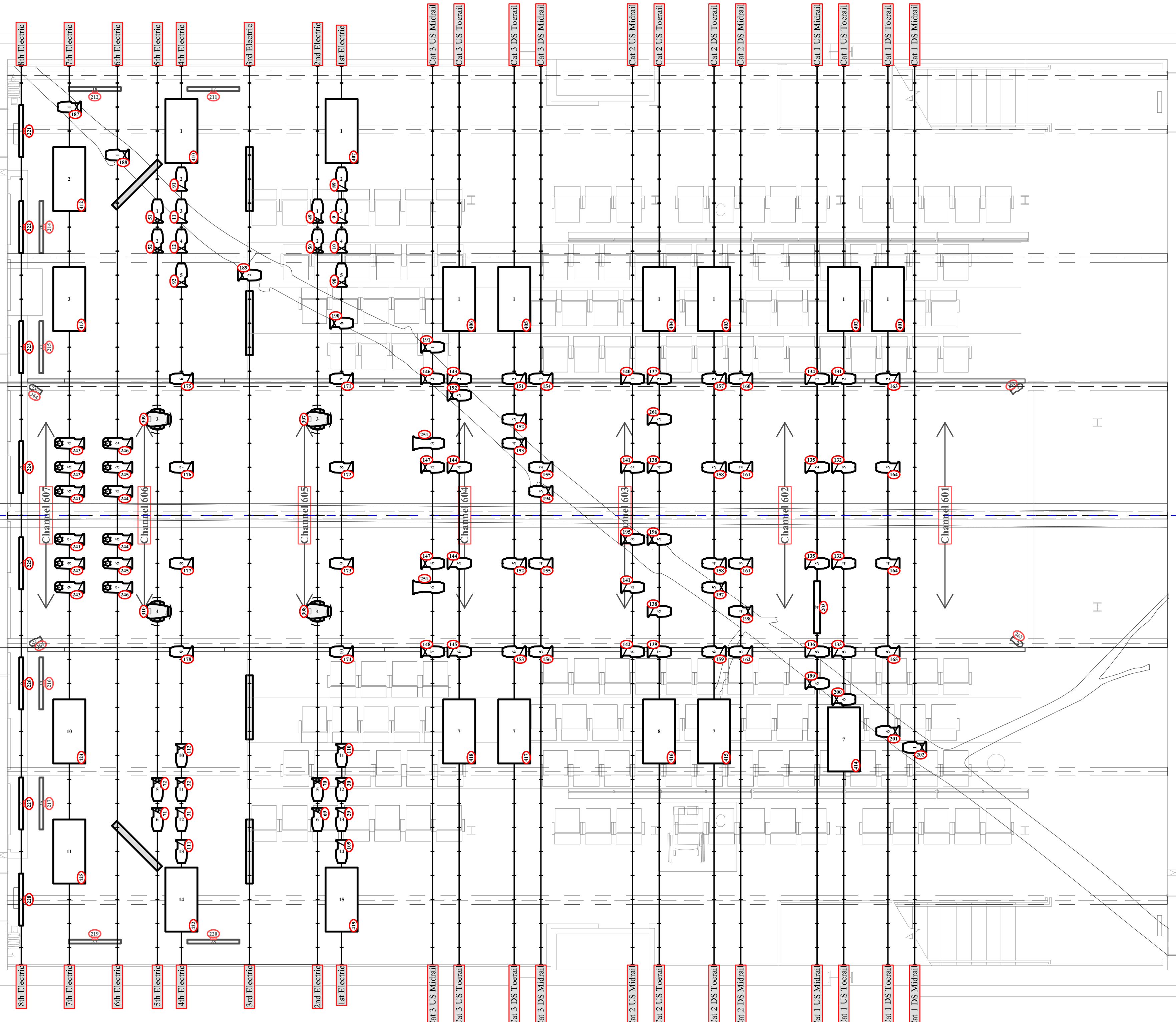
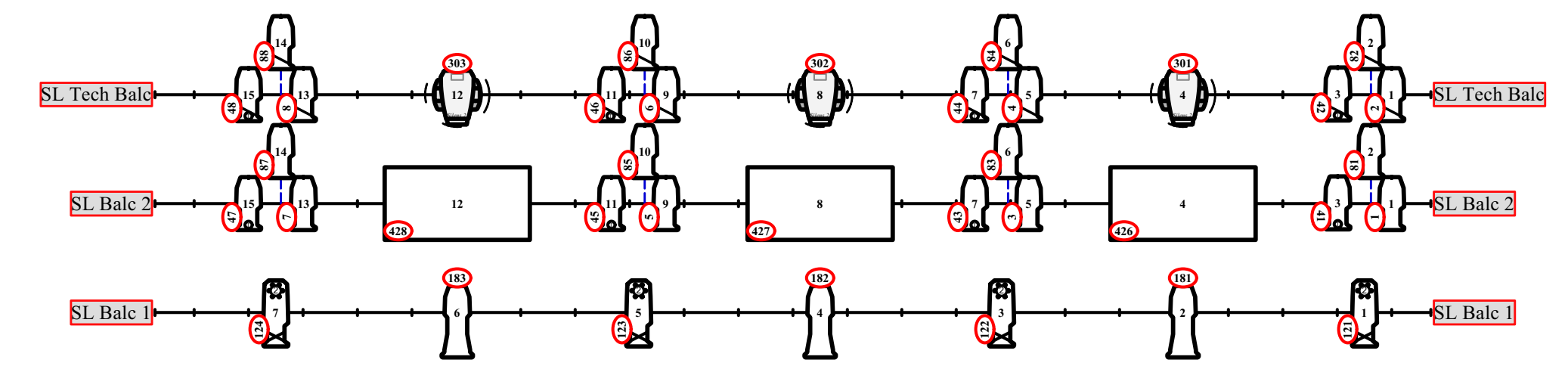
# LIGHT PLOT

## LX Rig Overview

### Revision History

REV	REVISION	DATE
A	Final	3/25/2023

Scale: 1/4" = 1'0"  
 Sheet: 1 of 5



- General Notes**
- See Hookup for Gobo & Color information
  - Dimensions within 1/8" may be rounded to the nearest inch
  - 18" Centers on Tick Marks
  - Stiffen all electrics
  - Provide additional cuts of R119 & R114 at hang & focus
  - Any changes must be approved by Lighting Designer



Symbol Key

Conventionals

- ETC S4 14°
- ETC S4 19°
- ETC S4 26°
- ETC S4 36°
- MR-16 Birdie WFL
- LEDs**
- ETC S4 LUSTR2 19°
- ETC S4 LUSTR2 26°
- ETC ColorSource CYC
- Chauvet DJ Pinpoint Bar
- Chauvet COLORado Batten 72

Customs

- Photoflex Dimmable Softbox
- 4' x 2' Costec LED Panel
- RGBW Neonflex

Moving Heads

- Chauvet Maverick Silens 2 Profile

Typical

- Gobo DMX Iris Channel

Lighting Design by Jackson Funke Design

jacksonfunkedesign@gmail.com  
(612).584.7200

Director ..... Alex Timbers      Associate LD ..... Natasha Katz  
 Scenic Design ..... Scott Park      Assistant LD ..... Ken Posner  
 Costume Design ..... Gabriella Shale      Production LX .....  
 Sound Design ..... Peter Hylenki      The Ghost of Stanley McCandles

This drawing represents visual concepts only. The designers are unqualified to determine the structural or electrical appropriateness of this design and will not assume responsibility for improper engineering construction, handling, or use. All materials and construction must comply with the most stringent applicable federal and local fire, safety, energy, and environmental codes.

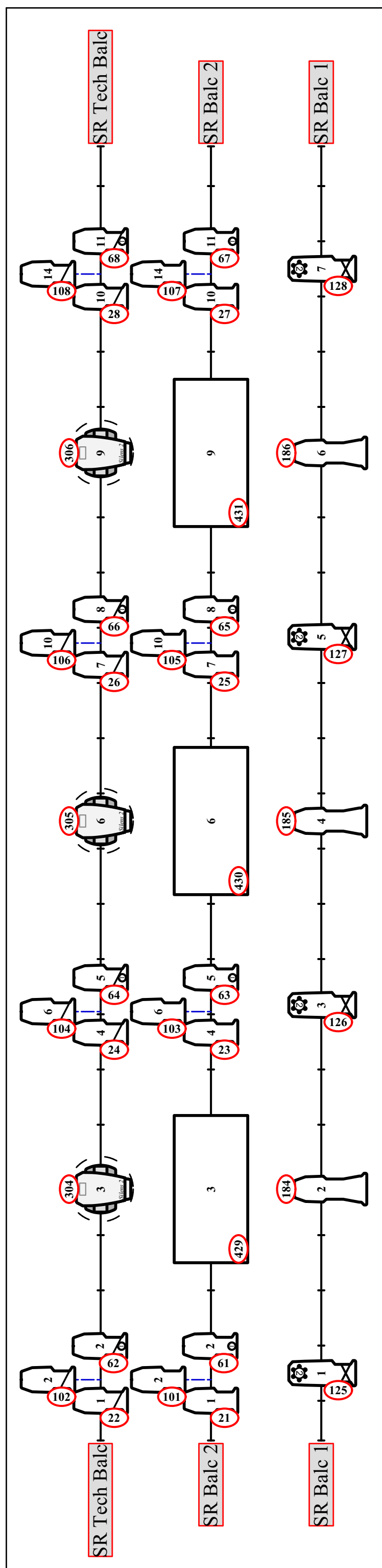
THEATRE FOR A NEW AUDIENCE	REV
	A

LIGHT PLOT  
Overstage/Balc Rails

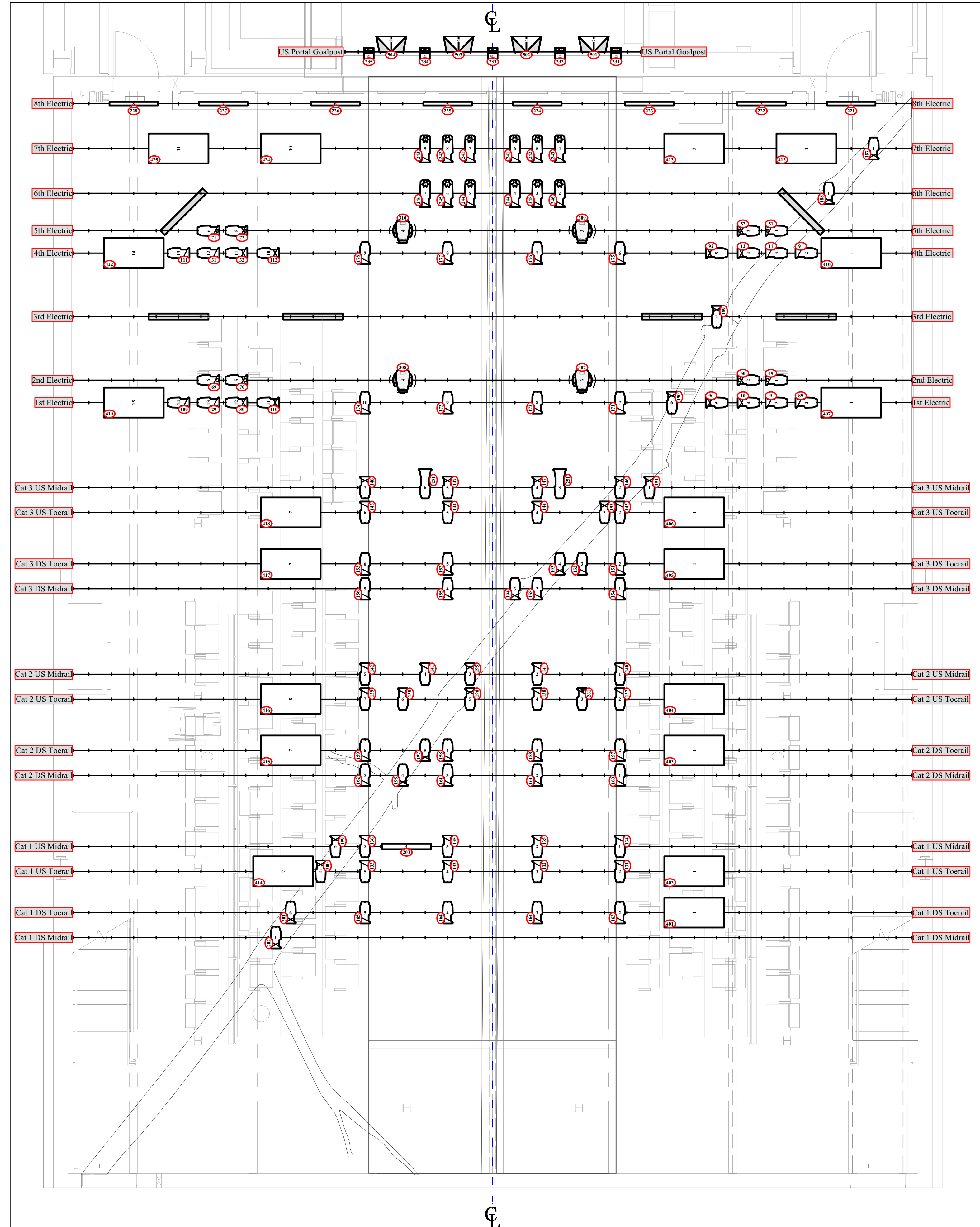
Revision History

REV	REVISION	DATE
A	Final	3/25/2023

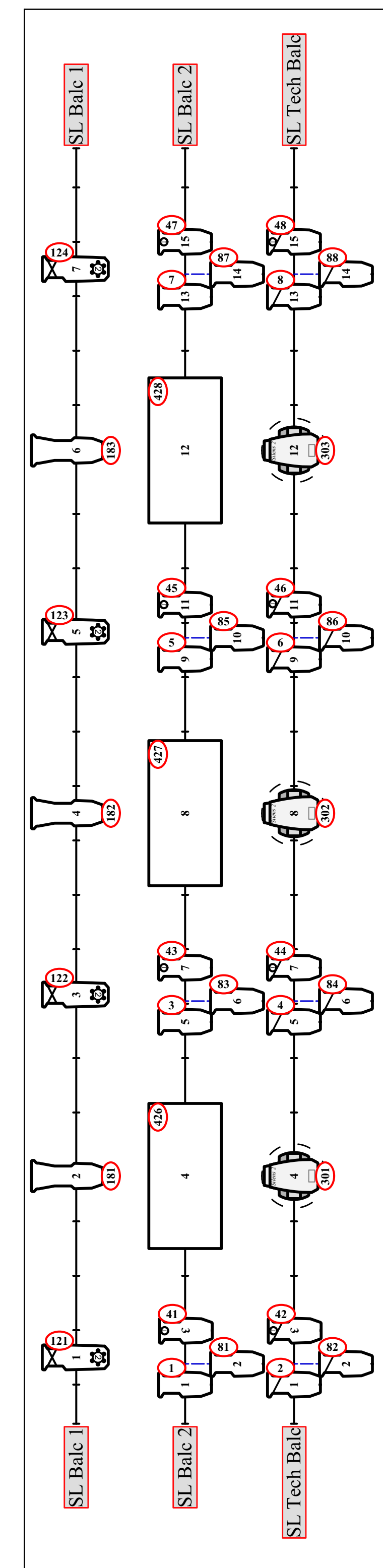
Scale: See Labels      Sheet: 2 of 5



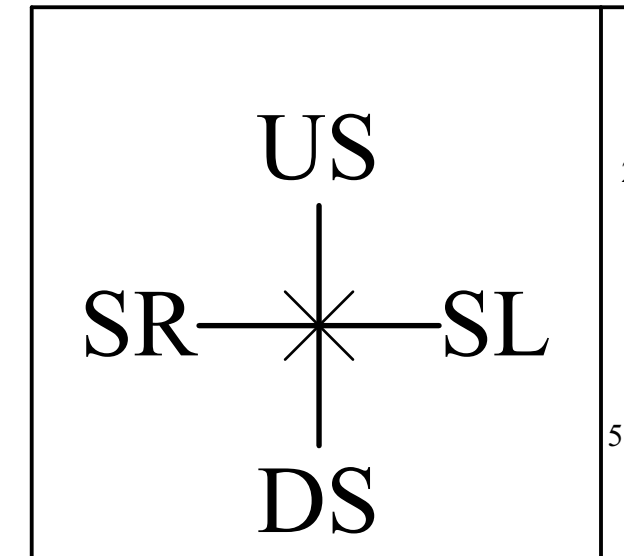
2 Stage Right Balcony Rails  
Scale: 3/8" = 1'-0"



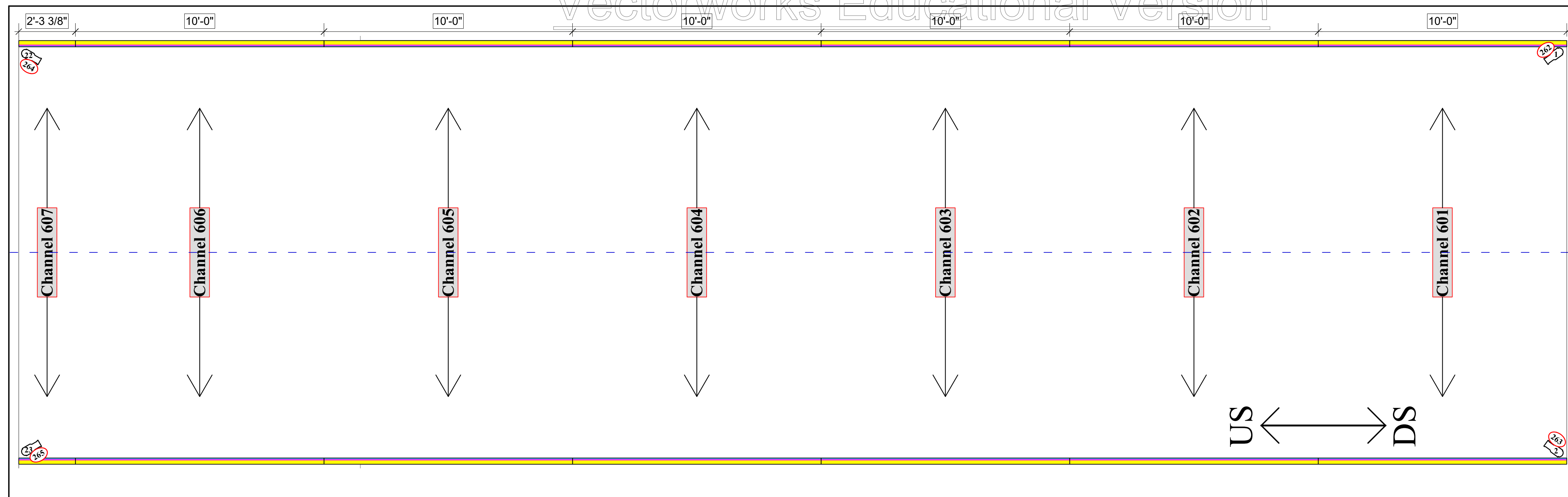
Scale: 1/4" = 1'-0"  
Overstage 3



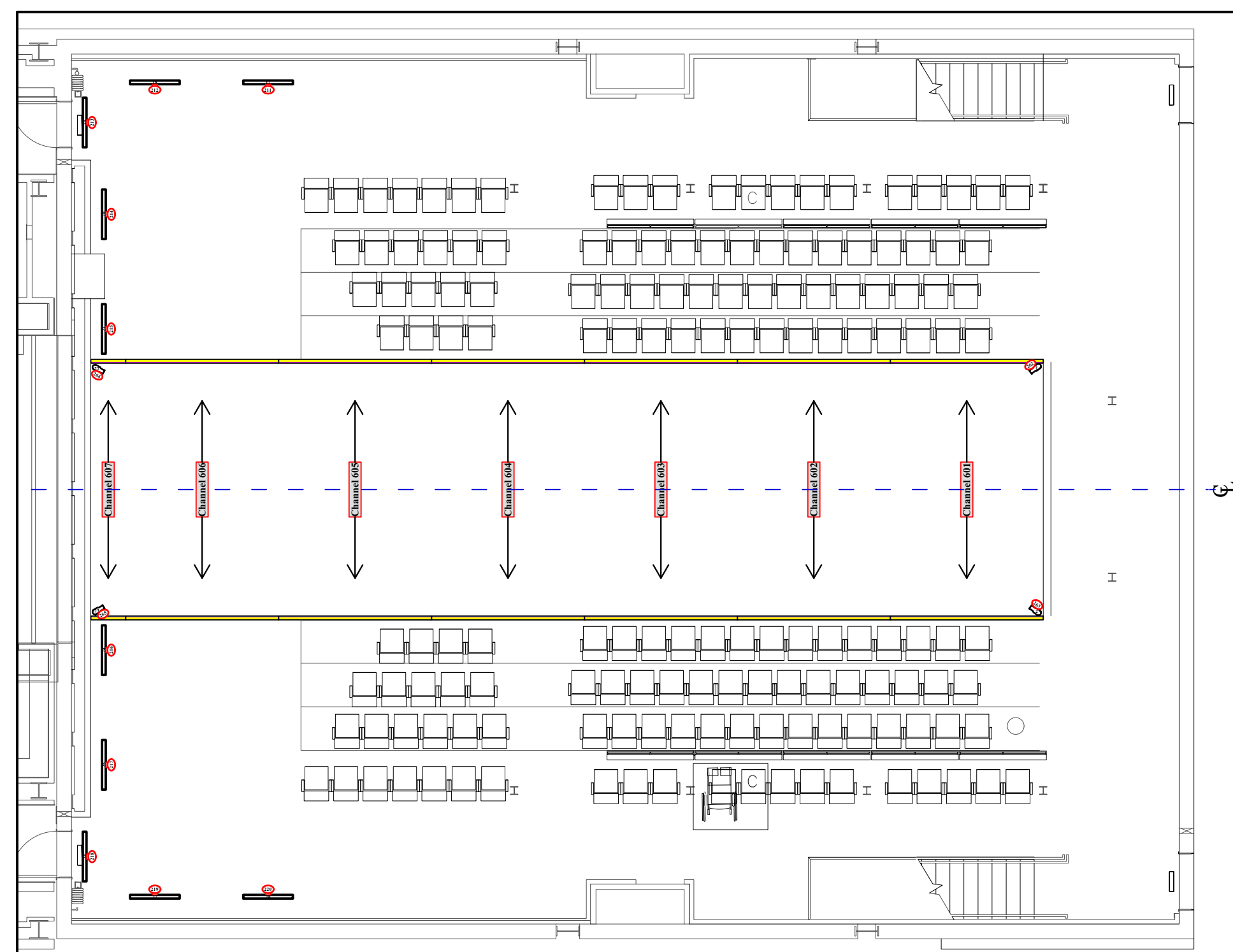
1 Stage Left Balcony Rails  
Scale: 3/8" = 1'-0"



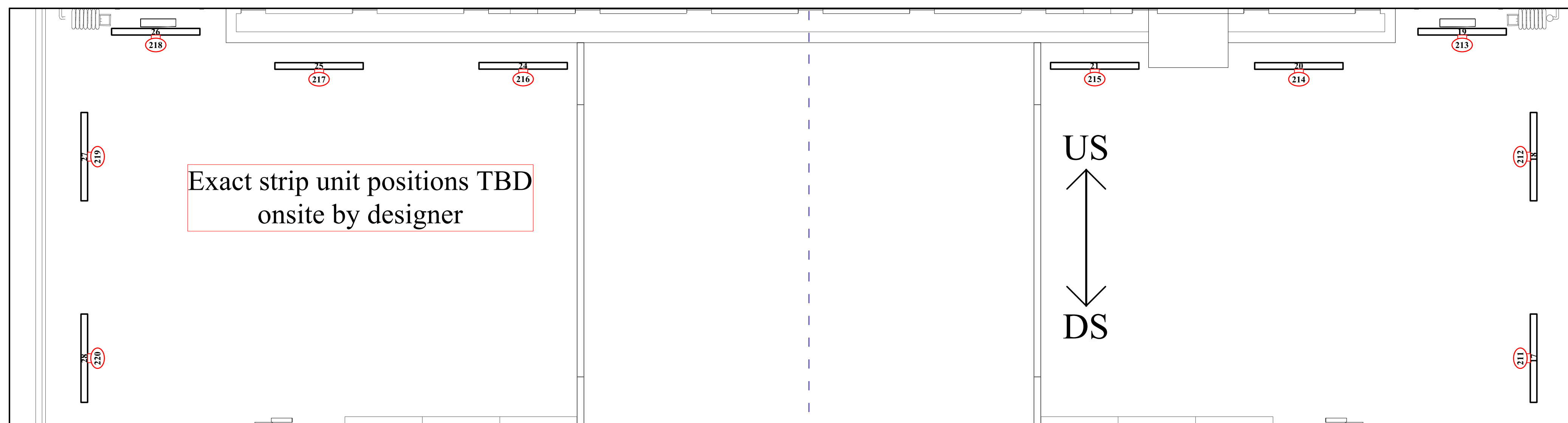
- General Notes**
- See Hookup for Gobo & Color information
  - Dimensions within 1/8" may be rounded to the nearest inch
  - 18" Centers on Tick Marks
  - Stiffen all electrics
  - Provide additional cuts of R119 & R114 at hang & focus
  - Any changes must be approved by Lighting Designer



See Sheet 4 for Addition Neonflex Detail



Scale: 1/8" = 1'-0"  
Deck Unit Overview



Scale: 3/8" = 1'-0"  
Deck Strip Detail



**Symbol Key**

**Conventionals**

- ETC S4 14°
- ETC S4 19°
- ETC S4 26°
- ETC S4 36°
- MR-16 Birdie WFL

**LEDs**

- ETC S4 LUSTR2 19°
- ETC S4 LUSTR2 26°
- ETC ColorSource CYC
- Chauvet DJ Pinpoint Bar
- Chauvet COLORado Batten 72

**Customs**

- Photoflex Dimmable Softbox
- 4' x 2' Costec LED Panel
- RGBW Neonflex

**Moving Heads**

- Chauvet Maverick Silens 2 Profile

**Typical**

- Gobo - DMX Iris - Channel

Lighting Design by Jackson Funke Design  
jacksonfunkedesign@gmail.com  
(612).584.7200

Director: Alex Timbers  
Scenic Design: Scott Paak  
Costume Design: Gabriella Shale  
Sound Design: Peter Hylenski

Associate LD: Natasha Katz  
Assistant LD: Ken Posner  
Production LX: The Ghost of Stanley McCandles

This drawing represents visual concepts only. The designers are unqualified to determine the structural or electrical appropriateness of this design and will not assume responsibility for improper engineering construction, handling, or use. All materials and construction must comply with the most stringent applicable federal and local fire, safety, energy, and environmental codes.



**LIGHT PLOT**  
Deck Units

**Revision History**

REV	REVISION	DATE
A	Final	3/25/2023

- General Notes**
- See Hookup for Gobo & Color information
  - Dimensions within 1/8" may be rounded to the nearest inch
  - 18" Centers on Tick Marks
  - Stiffen all electrics
  - Provide additional cuts of R119 & R114 at hang & focus
  - Any changes must be approved by Lighting Designer

Scale: See Labels  
Sheet: 3 of 5



Symbol Key

Conventionals

- ETC S4 14°
- ETC S4 19°
- ETC S4 26°
- ETC S4 36°
- MR-16 Birdie WFL

LEDs

- ETC S4 Lustr2 19°
- ETC S4 Lustr2 26°
- ETC ColorSource CYC
- Chauvet DJ Pinpoint Bar
- Chauvet COLORado Batten 72

Customs

- Photoflex Dimmable Softbox
- 4' x 2' Costec LED Panel
- RGBW Neonflex

Moving Heads

- Chauvet Maverick Silens 2 Profile

Typical

- Gobo DMX Iris Channel

Lighting Design by Jackson Funke Design

jacksonfunkedesign@gmail.com  
(612).584.7200

Director ..... Alex Timbers Associate LD ..... Natasha Katz  
 Scenic Design ..... Scott Park Assistant LD ..... Ken Postner  
 Costume Design ..... Gabriella Shale Production LX .....  
 Sound Design ..... Peter Hylenki The Ghost of Stanley McCandles

This drawing represents visual concepts only. The designers are unqualified to determine the structural or electrical appropriateness of this design and will not assume responsibility for improper engineering construction, handling, or use. All materials and construction must comply with the most stringent applicable federal and local fire, safety, energy, and environmental codes.

	REV
	A

LIGHT PLOT  
Elevation

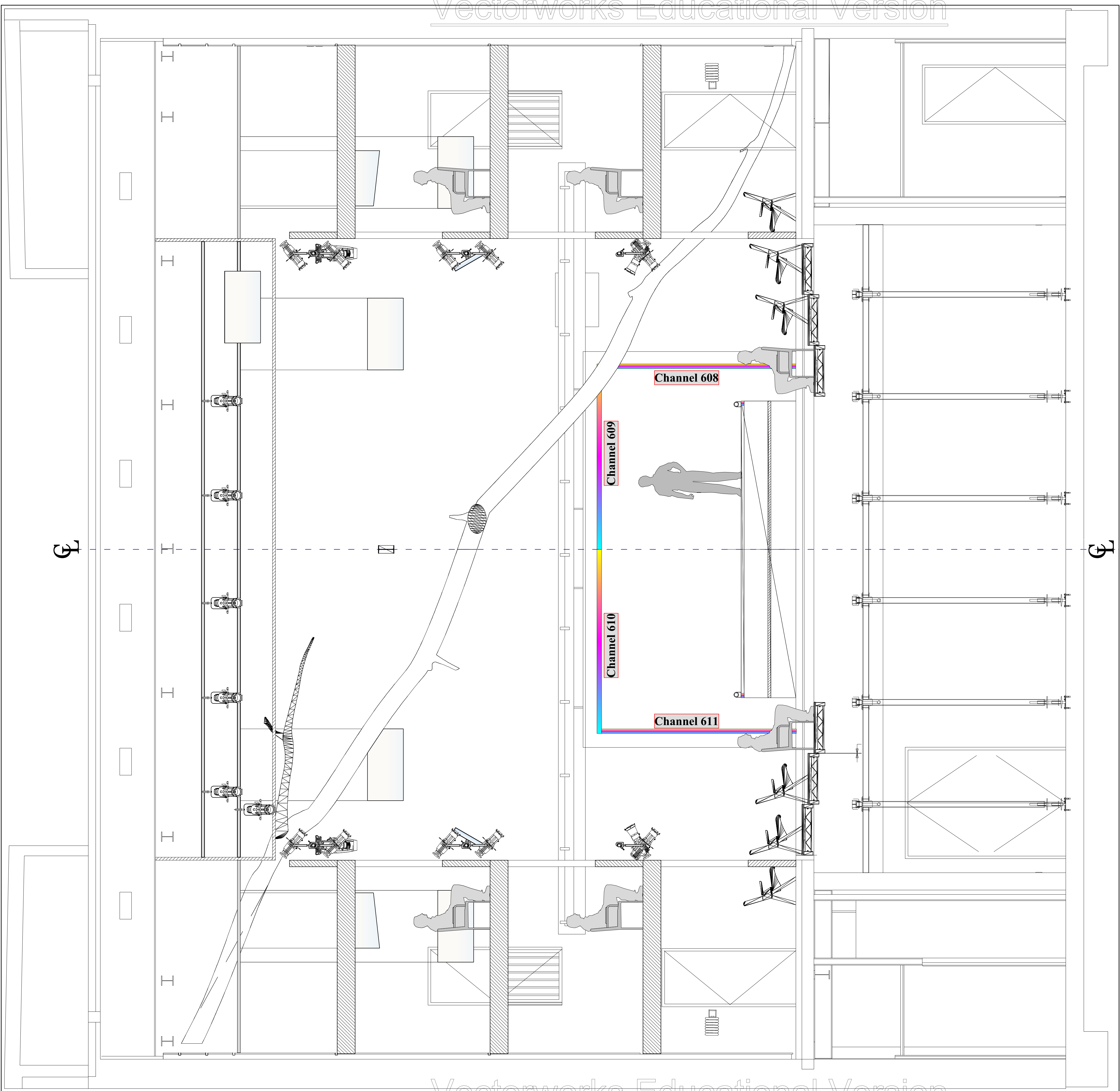
Revision History

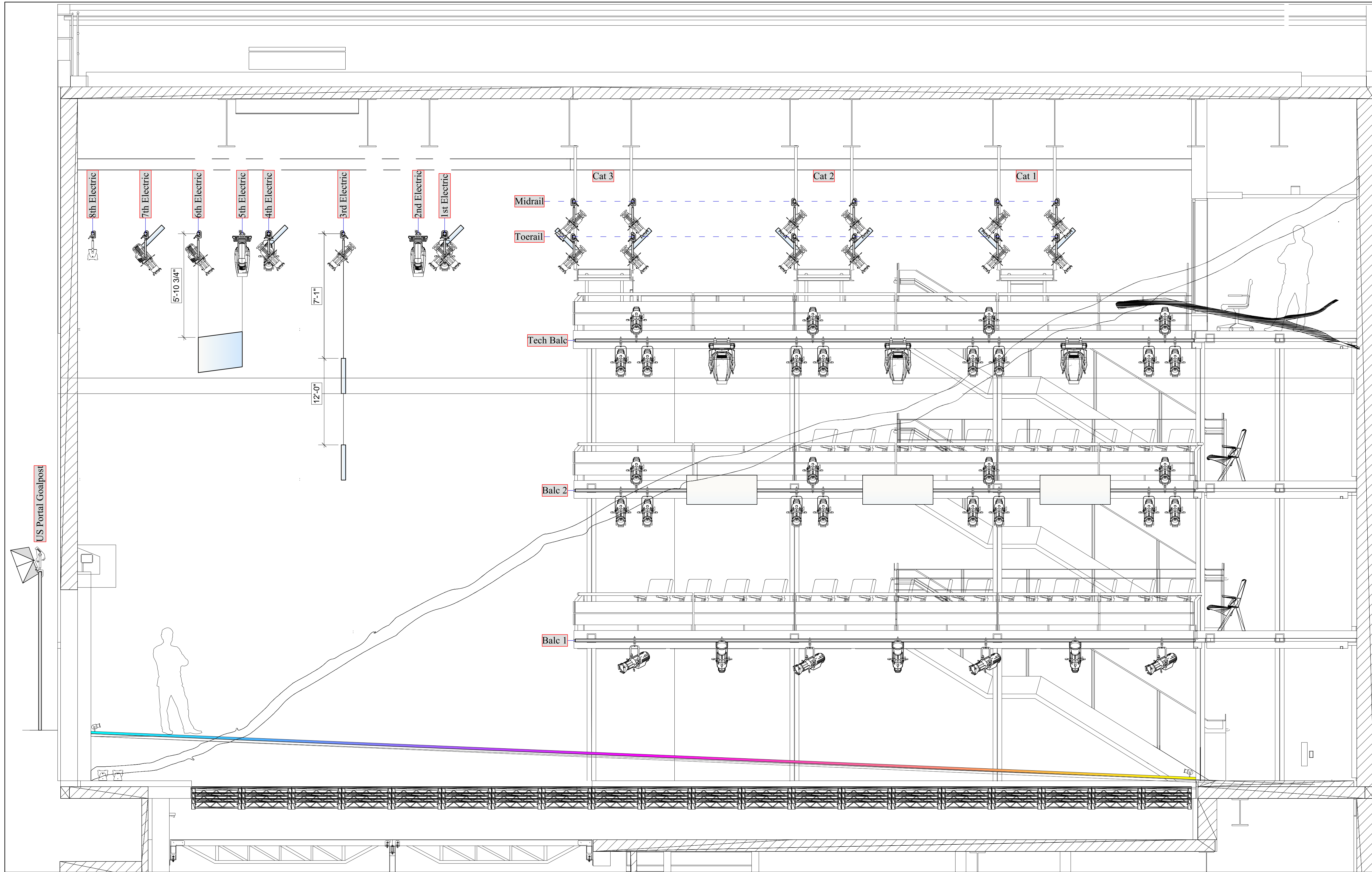
REV	REVISION	DATE
A	Final	3/25/2023

Scale: 3/8" = 1'0"  
Sheet: 4 of 5

General Notes

1. See Hookup for Gobo & Color information
2. Dimensions within 1/8" may be rounded to the nearest inch
3. 18" Centers on Tick Marks
4. Stiffen all electrics
5. Provide additional cuts of R119 & R114 at hang & focus
6. Any changes must be approved by Lighting Designer





Symbol Key

Conventionals

- ETC S4 14°
- ETC S4 19°
- ETC S4 26°
- ETC S4 36°
- MR-16 Birdie WFL

LEDs

- ETC S4 LUSTR2 19°
- ETC S4 LUSTR2 26°
- ETC ColorSource CYC
- Chauvet DJ Pinpoint Bar
- Chauvet COLORado Batten 72

Customs

- Photoflex Dimmable Softbox
- 4' x 2' Costec LED Panel
- RGBW Neonflex

Moving Heads

- Chauvet Maverick Silens 2 Profile

Typical

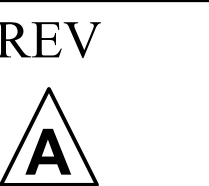
- Gobo DMX Iris Channel

Lighting Design by Jackson Funke Design

jacksonfunkedesign@gmail.com  
(612).584.7200

Director ..... Alex Timbers Associate LD ..... Natasha Katz  
 Scenic Design ..... Scott Park Assistant LD ..... Ken Posner  
 Costume Design ..... Gabriella Shale Production LX .....  
 Sound Design ..... Peter Hylenski The Ghost of Stanley McCandleless

This drawing represents visual concepts only. The designers are unqualified to determine the structural or electrical appropriateness of this design and will not assume responsibility for improper engineering construction, handling, or use. All materials and construction must comply with the most stringent applicable federal and local fire, safety, energy, and environmental codes.



LIGHT PLOT  
Centerline Section

Revision History

REV	REVISION	DATE
A	Final	3/25/2023

General Notes

1. See Hookup for Gobo & Color information
2. Dimensions within 1/8" may be rounded to the nearest inch
3. 18" Centers on Tick Marks
4. Stiffen all electrics
5. Provide additional cuts of R119 & R114 at hang & focus
6. Any changes must be approved by Lighting Designer

Scale: 3/8" = 1'0"  
Sheet: 5 of 5